

# MONTHLY MEMBERSHIP PROGRESS REPORT

LOCATION WISCONSIN

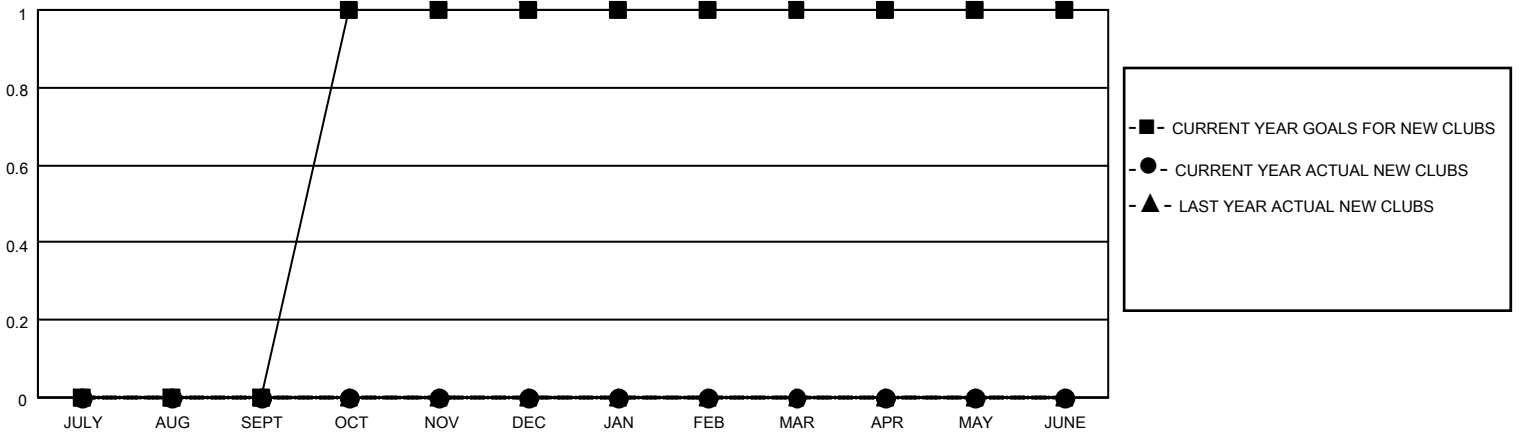
District 27 B2

Results as of: 7/31/2020

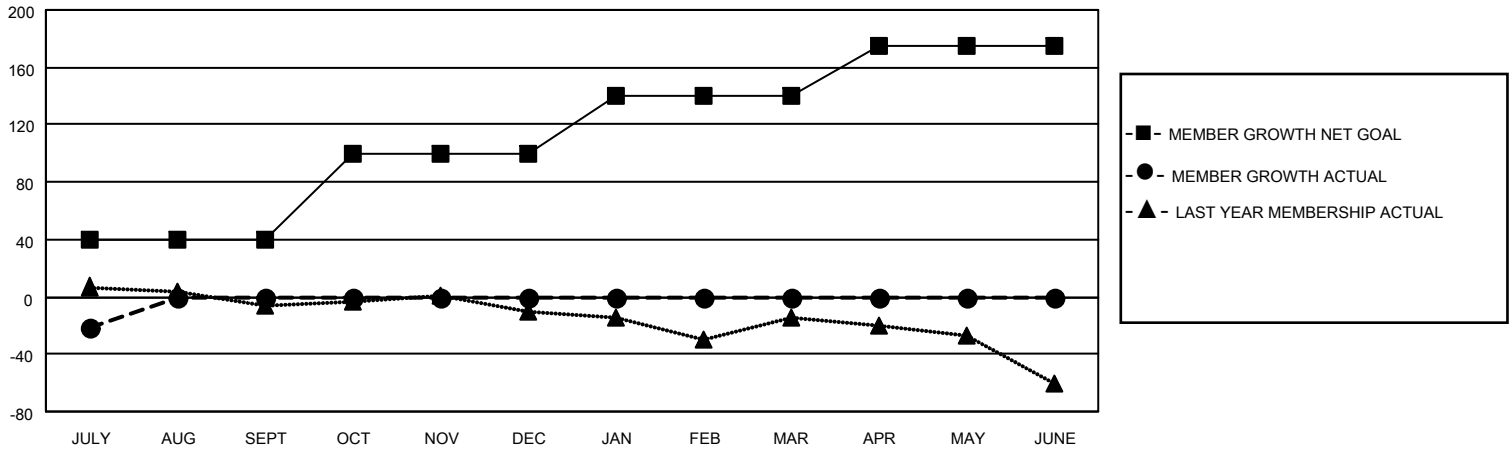
Clubs			
RESULTS FOR 2020-2021			
QUARTER	NEW CLUB GOAL	NEW CLUBS	DROPPED CLUBS
JULY/AUG/SEPT	0	0	0
OCT/NOV/DEC	1	0	0
JAN/FEB/MAR	0	0	0
APR/MAY/JUNE	0	0	0

Members			
RESULTS FOR 2020-2021			
QUARTER	MEMBER GROWTH NET GOAL	MEMBER GROWTH ACTUAL	DROPPED MEMBERS ACTUAL (including transfers)
JULY/AUG/SEPT	40	6	26
OCT/NOV/DEC	60	0	0
JAN/FEB/MAR	40	0	0
APR/MAY/JUNE	35	0	0

**GOALS AND ACTUAL NEW CLUBS CUMULATIVE**



**GOALS AND ACTUAL MEMBERS CUMULATIVE**



**DROPPED CLUBS: 0**

**4 CLUBS OF 66 ADDED 1 OR MORE NEW MEMBERS**

**GENDER DISTRIBUTION**

MALE 1,745 (80.82%)  
FEMALE 414 (19.18%)

**DROPPED MEMBERS**

DECEASED	2
CLUB CANCELLED	0
OTHER	24
<b>TOTAL</b>	<b>26</b>

[CLICK HERE FOR CUMULATIVE MEMBERSHIP DATA](#)

TOTAL FAMILY UNIT MEMBERS	340
FAMILY MEMBERS PAYING HALF DUES	171